



CAJA A

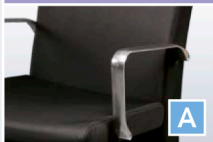
1



2



Bordado

Apoyabrazos
de Aluminio

Niveladores

PESO

ALTURA
ASIENTOALTURA
RESPALDOANCHO
ASIENTOANCHO
TOTALFONDO
TOTAL

17,5 kg

510 mm
(20.1")550 mm
(21,7")480 mm
(18.9")590 mm
(19.3")650 mm
(25.6")